



Mounting instructions: Sidebar series GM/GC/BM/BC/RM/RC/RS3

Volkswagen Transporter T5GP



SW8



SW13 (23Nm)



SW17 (46Nm)



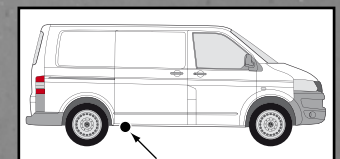
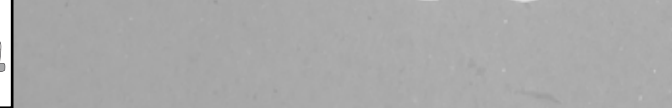
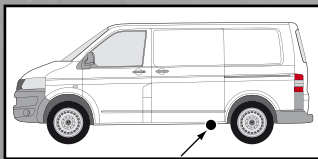
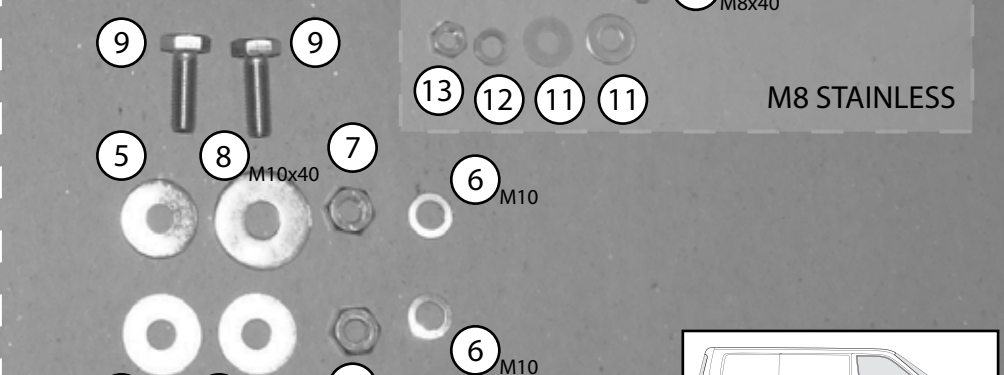
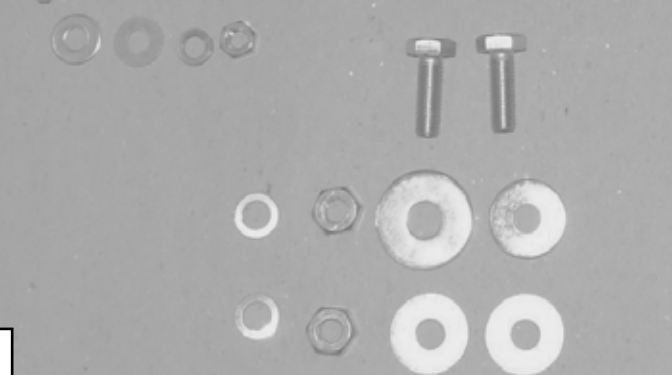
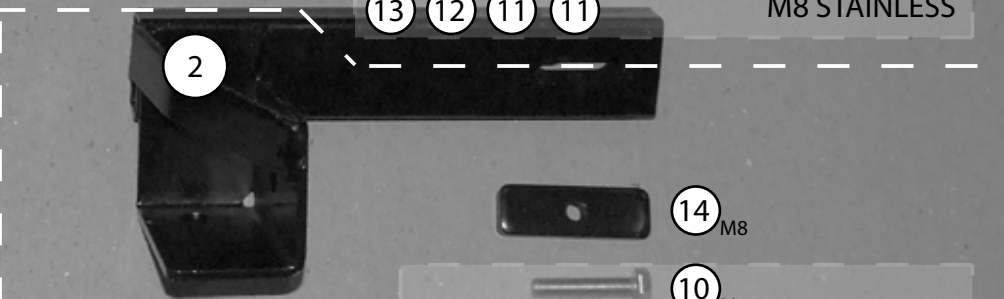
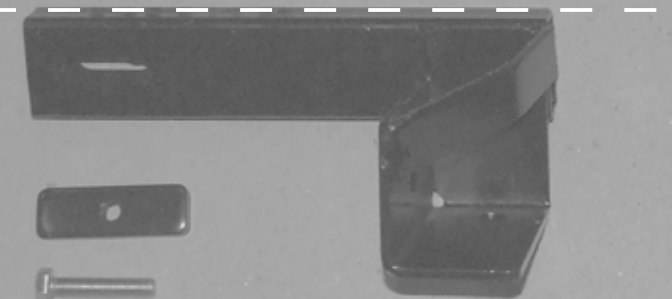
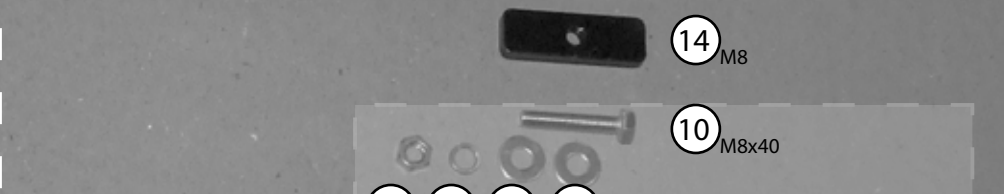
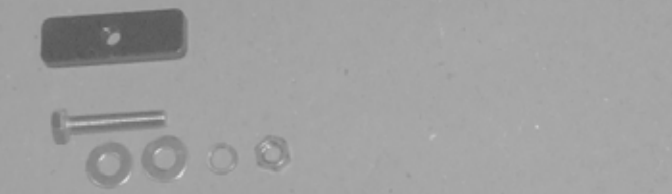
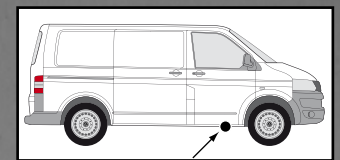
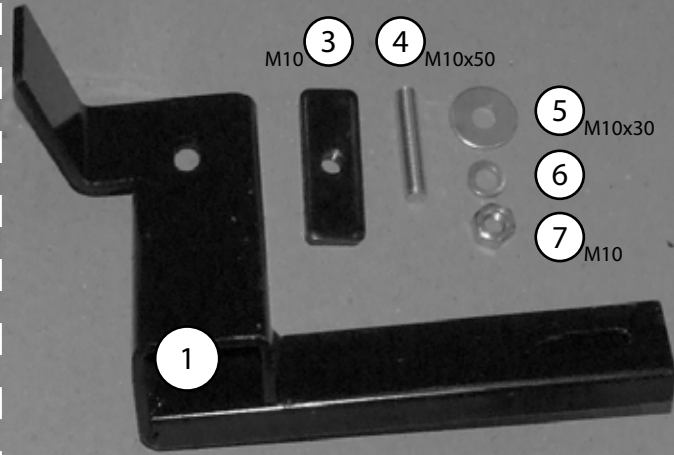
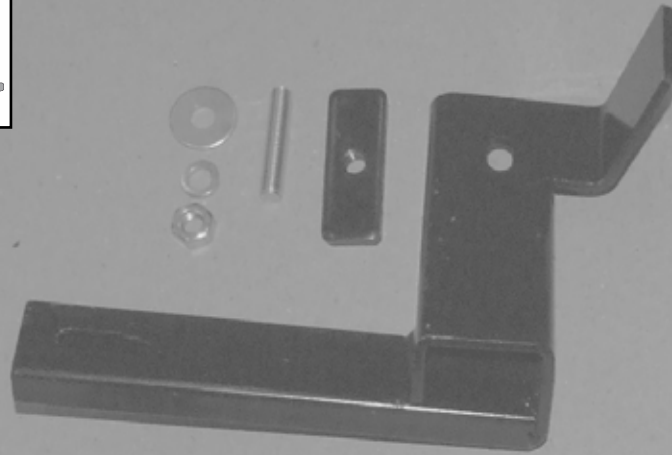
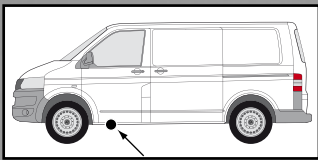
60 Min.

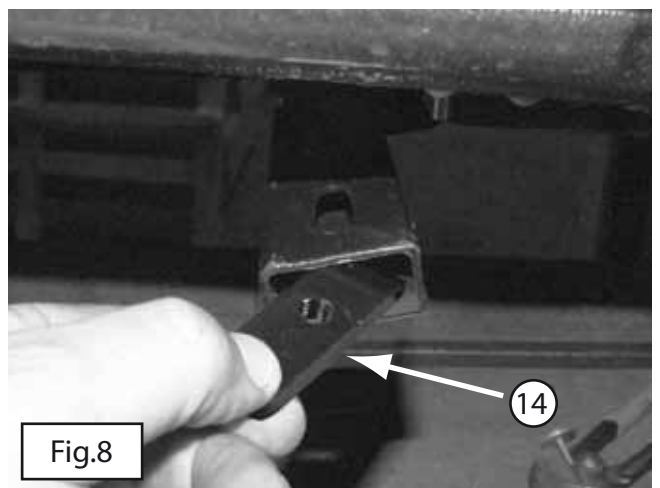
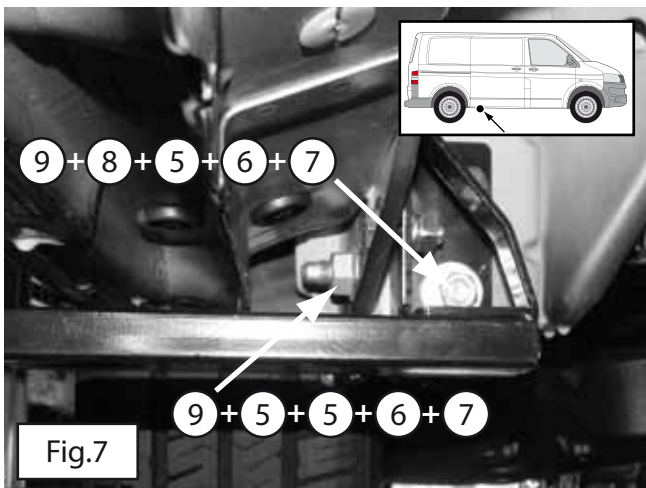
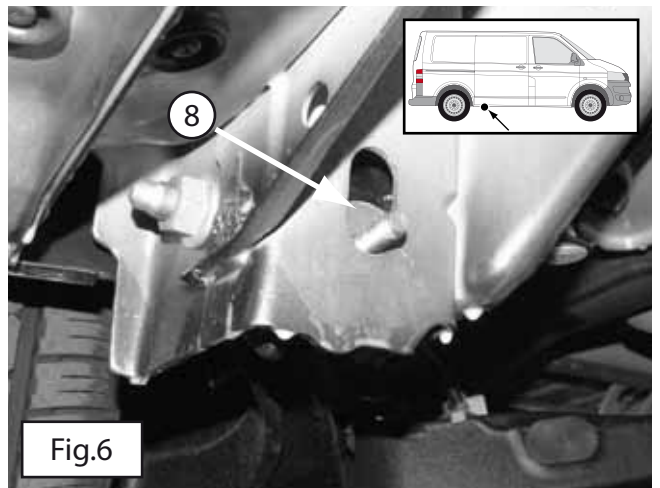
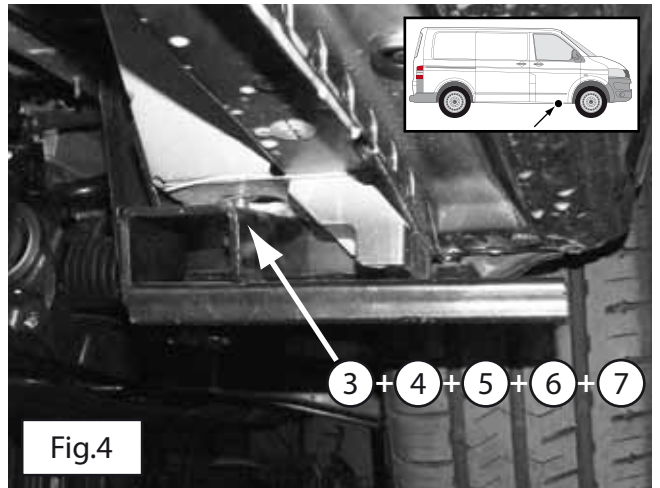
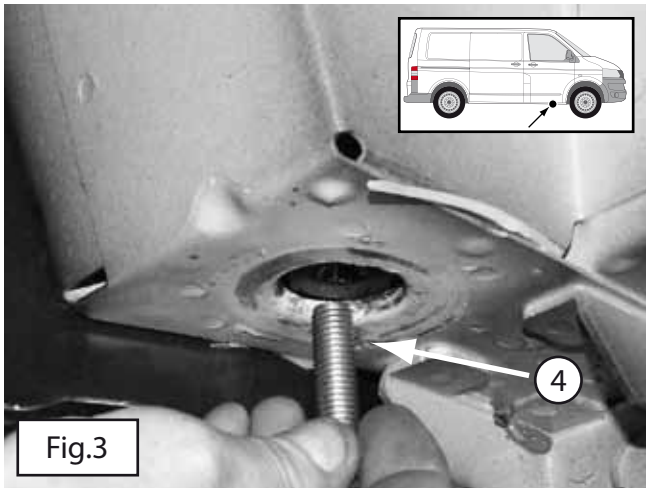
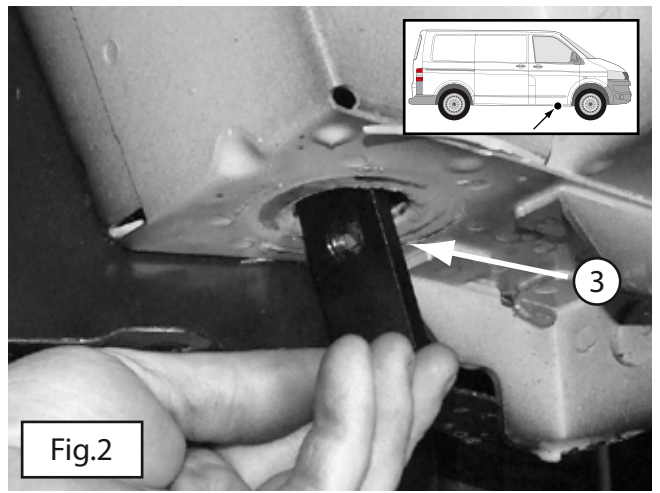
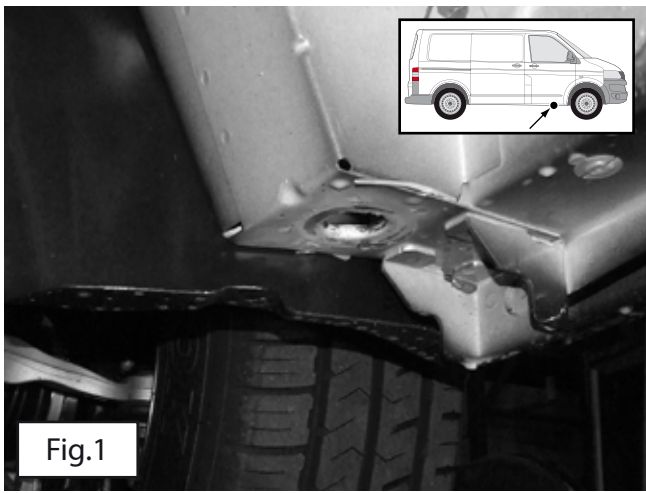


Assembly sequence:

- Step 1: Remove the plastic bottom plates.
- Step 2: Ensure that all mounting components are present. Use the diagram on the next page.
- Step 3: Start by installing the brackets first. To clarify, see figure 1 to 7 on the next page.
Attention: Do not fully tighten the bolts yet. This comes later. Make sure the brackets just “hang” and can freely move around the bolt.
- Step 4: Now start by mounting the side bars to the brackets. See figure 8 to 10. Again do not fully tighten the M8x40s.
- Step 5: Now continue by completely mounting the brackets. Make sure all bolts are tightened at the correct torque value. (The value can be found at the front page.)
- Step 6: Next step is to position the side bars. Make sure the sidebars are parallel to the body. Decide whether you want the sidebars a little further inwards or outwards. The mounting lips have slotted holes which gives you this possibility.
- For best protection the side bars should be mounted as far from the body as possible.**
- Step 7: You are almost ready now. Tighten the bolts at the right torque value, which you can find at the front page.
- Step 8: Last step is to modify the plastic bottom plates which you removed at step 1. See figure 11 and 12. Cut out the highlighted part from the plastic bottom plates. This is the part marked between the marking lines.

Now you can replace the bottom plates and reassemble them.





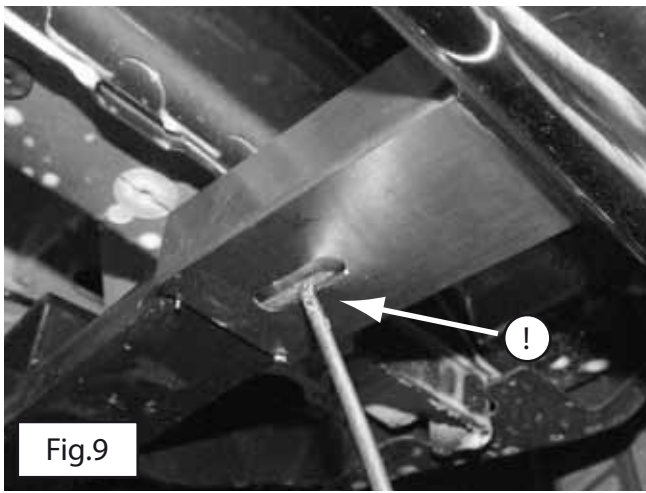


Fig.9

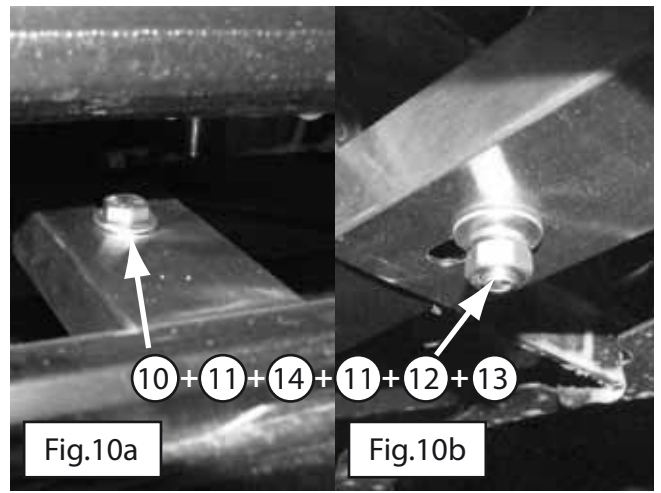


Fig.10a

Fig.10b

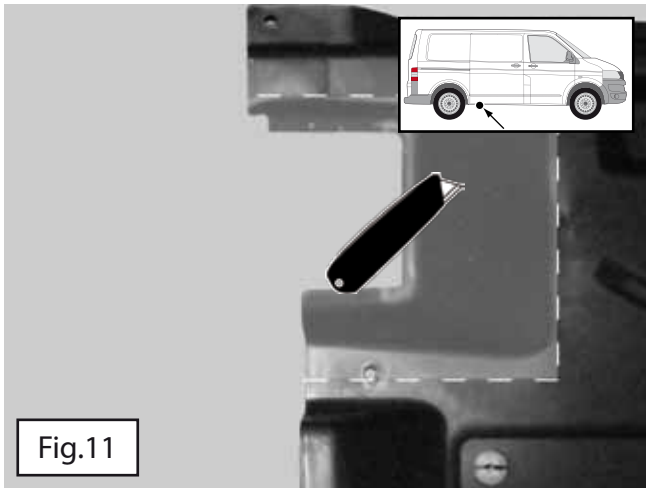


Fig.11

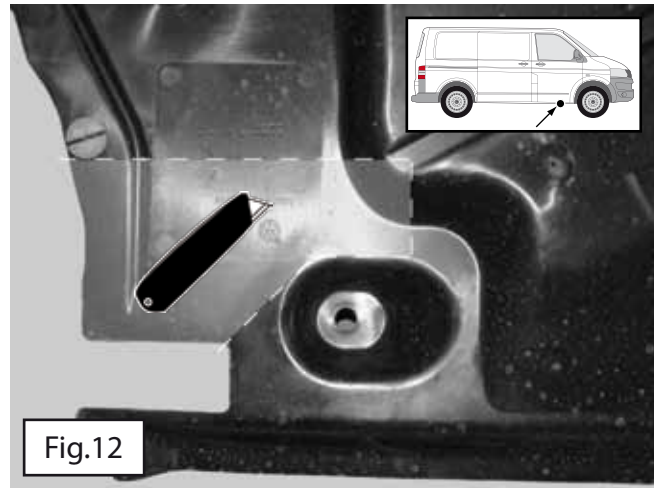


Fig.12